

Guggenheim Life & Ann Co

Group Affiliation: Guggenheim Life Group
Address: 401 Pennsylvania Pky Suite 300
 Indianapolis IN 46280
Phone: 317-574-6213

Domicile: DE
NAIC Number: 83607
Year Established: 1985
Company Type: Stock

Ratings

A.M. Best Company(Best's Rating, 15 ratings) B++ (5)
 Weiss(Safety Rating, 16 ratings) B- (6)

Assets & Liabilities

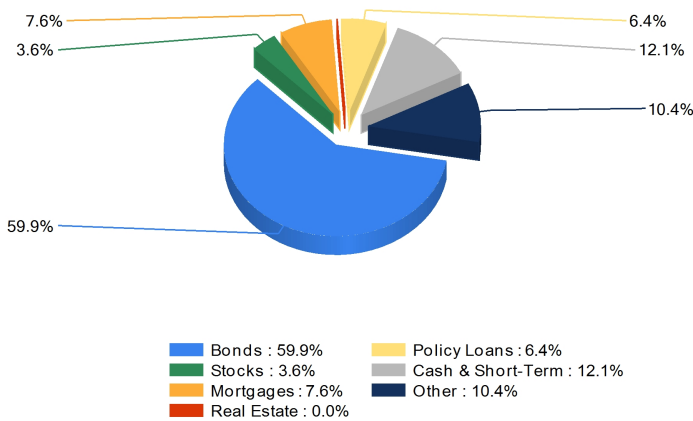
Total Admitted Assets 12,812,437
 Total Liabilities 12,166,479
 Separate Accounts 1,740,824
 Total Surplus & AVR 726,179
 As % of General Account Assets 6.6%

Invested Asset Distribution

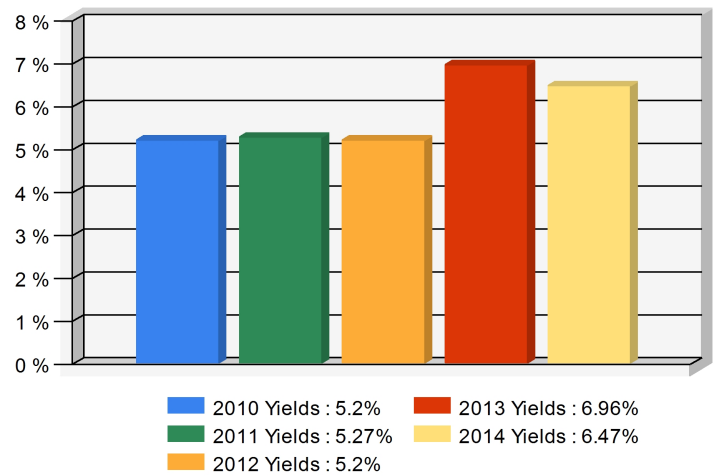
Total Invested Assets 8,334,140

5 Year Investment Yields

5 Year Average 5.82%



Distribution of the invested assets



Net yield on mean invested assets

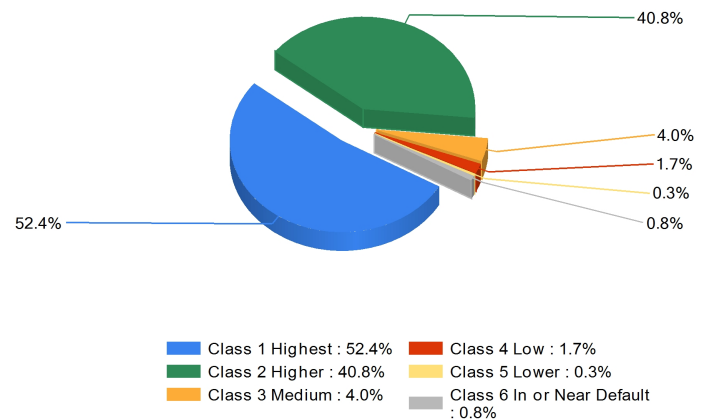
Non-Performing Assets

Bonds In or Near Default 6.2%
 Problem Mortgages 0.0%
 Real Estate Acquired by Foreclosure 0.0%
 Total Non-Performing Assets/Surplus & AVR 6.2%
 As a Percent of Invested Assets 0.5%

Income & Earnings

Total Income 2,211,903
 Net Premiums Written 1,674,275
 Earnings Before Dividends and Taxes 152,668
 Net Operating Earnings 156,794

Bond Quality



Distribution of bond classes

A Best's Financial Strength Rating opinion addresses the relative ability of an insurer to meet its ongoing insurance obligations. It is not a warranty of a company's financial strength and ability to meet its obligations to policyholders. View our Important Notice: Best's Credit Ratings for a disclaimer notice and complete details at <http://www.ambest.com/ratings/notice>.

Data for Year-End 2014 from the life insurance companies' statutory annual statements. All dollar amounts are in thousands. All ratings shown are current as of July 15, 2015.

Presented by: Vital Signs, Financials, Use, Only, ID 00325 Phone: 021800255 Email: cases@vitals.com